

acA3800-10gc

The acA3800-10gc [Basler ace GigE camera](#) is equipped with an onsemi MT9J003 sensor.



Specifications

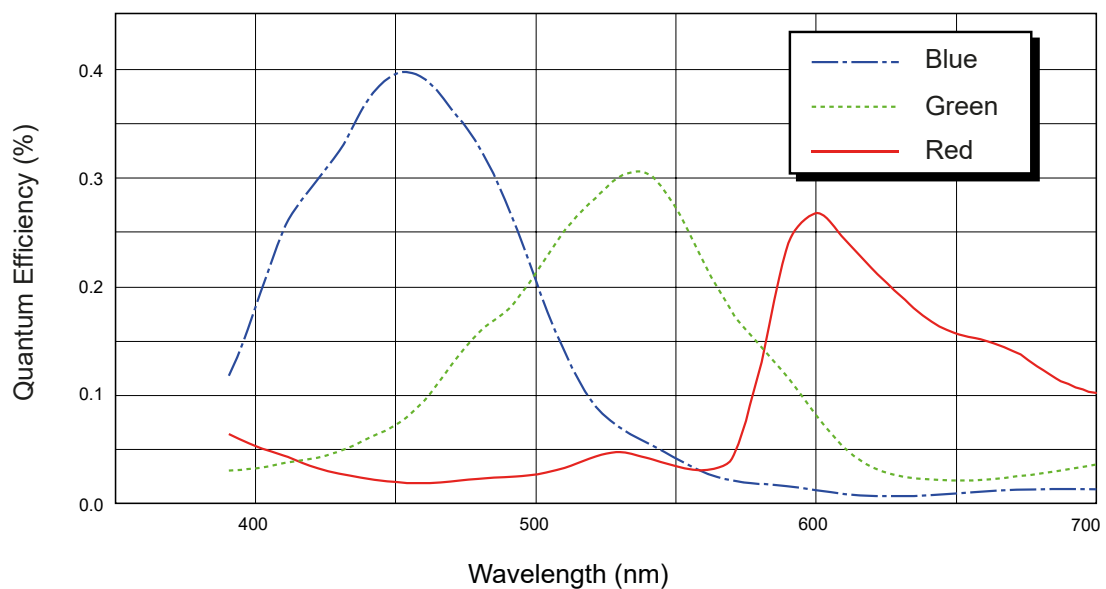
General Specifications

	acA3800-10gc
Resolution (H x V Pixels)	3840 × 2748
Resolution	10 MP
Sensor Type	onsemi MT9J003 Progressive scan CMOS Rolling shutter
Sensor Format	1/2.3"
Effective Sensor Diagonal	7.9 mm
Pixel Size (H x V)	1.67 × 1.67 μm

	acA3800-10gc
Frame Rate (at Default Settings)	10 fps
Product Family	ace Classic
Mono / Color	Color
Image Data Interface	Fast Ethernet (100 Mbit/s) Gigabit Ethernet (1000 Mbit/s)
Pixel Formats	See Pixel Format .
Synchronization	Via hardware trigger Via software trigger Via free run
Exposure Time Control	Via hardware trigger Programmable via the camera API
Camera Power Requirements	≈3.7 W when using Power over Ethernet ≈3.3 W @ 12–24 VDC when supplied via I/O connector
I/O Lines	1 opto-coupled input line 1 opto-coupled output line
Lens Mount	C-mount
Size (L x W x H)	42.0 x 29 x 29 mm (without lens mount or connectors) 60.3 x 29 x 29 mm (with lens mount and connectors)
Weight	<90 g
Conformity	CE (includes RoHS), EAC, UKCA, UL Listed, FCC, GenICam, GigE Vision, IP30, IEEE 802.3af (PoE), REACH, KC Certificates for your camera model ↗ For more information, see the Compliance ↗ section of the Basler website.

	acA3800-10gc
Software	Basler pylon Software Suite ↗ (version 4.0 or higher) Available for Windows, Linux x86, Linux ARM, macOS, and Android
Accessories	Accessories for your camera model ↗
Availability and Pricing	See the product page ↗ on the Basler website.

Spectral Response




The spectral response curve excludes lens characteristics, light source characteristics, and IR cut filter characteristics.

IR Cut Filter

Color cameras are equipped with an IR cut filter. The filter is mounted in a filter holder inside the lens mount.

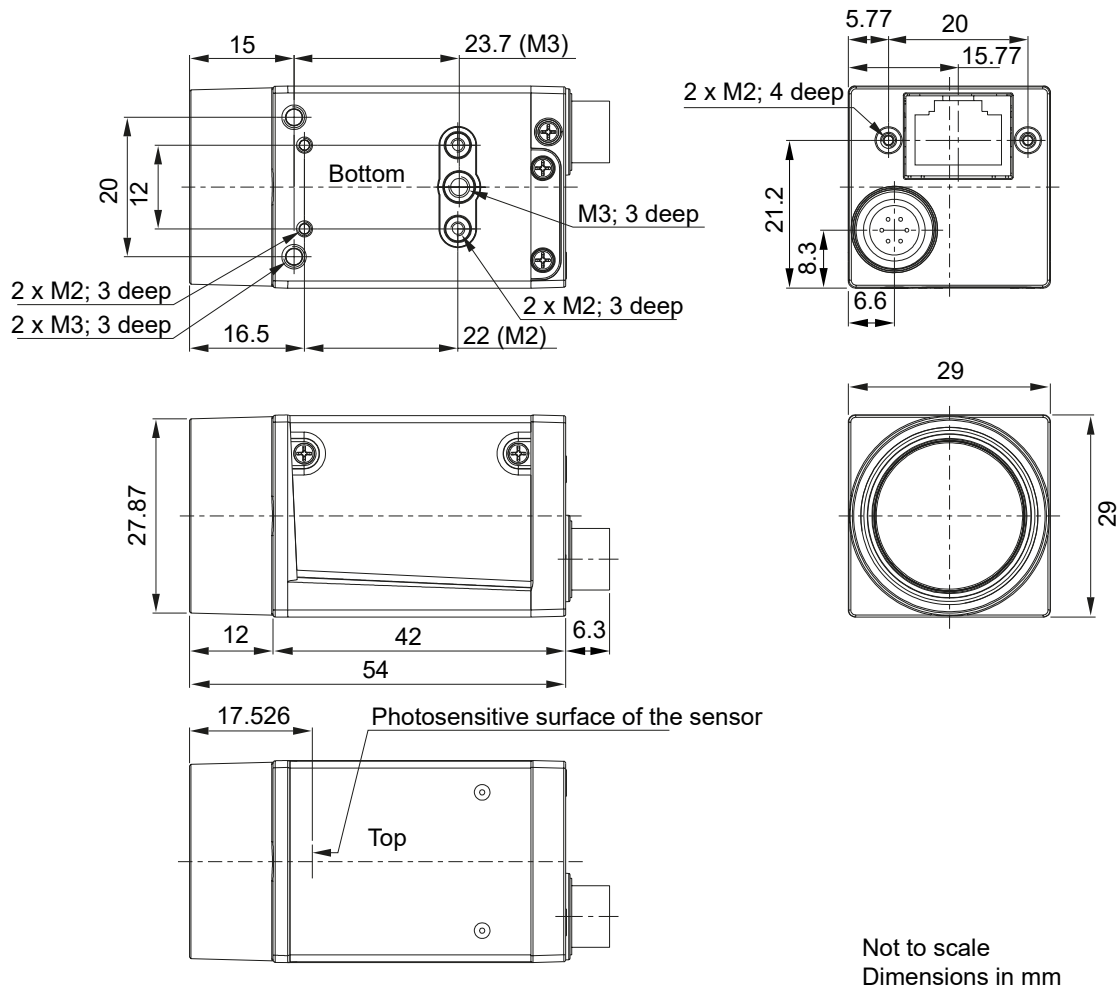
The IR cut filter has the following spectral characteristics:

Wavelength [nm]	Transmittance
450–610	$T_{\min} > 90 \%$
450–620	$T_{\text{avg}} > 93 \%$
645 ± 10	$T = 50 \%$
700–1070	$T_{\max} < 4 \%$
690–1070	$T_{\text{avg}} < 1 \%$

The filter holder can be removed. For more information, see the [ace IR Cut Filter Holder Removal Procedure](#)  application note.

Mechanical Specifications

Camera Dimensions and Mounting Points



→ Download the [CAD/technical drawing for your Basler camera](#) [↗](#).

Maximum Allowed Lens Intrusion

→ [See Maximum Allowed Lens Intrusion.](#)

Stress Test Results

→ [See Stress Test Results.](#)

Requirements

Environmental Requirements

Temperature and Humidity

Housing temperature during operation	0–50 °C (32–122 °F)
Humidity during operation	20–80 %, relative, non-condensing
Storage temperature	–20–80 °C (–4–176 °F)
Storage humidity	20–80 %, relative, non-condensing
Housing temperature according to UL 60950-1	max. 70 °C (158 °F)
Ambient temperature according to UL 60950-1	max. 30 °C (86 °F)

Heat Dissipation

→ See [Providing Heat Dissipation](#).

Electrical Requirements



WARNING – Electric Shock Hazard



Unapproved power supplies may cause electric shock. Serious injury or death may occur.

- You must use power supplies that meet the Safety Extra Low Voltage (SELV) and Limited Power Source (LPS) requirements.
- If you use a powered hub or powered switch, they must meet the SELV and LPS requirements.



WARNING – Fire Hazard



Unapproved power supplies may cause fire and burns.

- You must use power supplies that meet the Limited Power Source (LPS) requirements.
- If you use a powered hub or powered switch, they must meet the LPS requirements.



NOTICE – Incorrect voltage can damage the camera.



You must supply camera and I/O power within the safe operating voltage ranges specified below.

Do not use negative voltage for an I/O line.

Camera Power



NOTICE – Dual camera power supply can damage the camera.



You must supply camera power **either** via Power over Ethernet (PoE) **or** via the camera's I/O connector.

Do not use both ways of supplying camera power at the same time.

- **Power supply via Power over Ethernet (PoE):** Power must comply with the IEEE 802.3af specification.
- **Power supply via I/O connector:** The operating voltage is 12–24 VDC. As a minimum, 10.8 VDC must be supplied. To avoid damaging the camera, a maximum of 30 VDC must not be exceeded.

Opto-Coupled I/O Input Line

Voltage	Description
30 VDC	Absolute maximum. This voltage must never be exceeded. Doing so may damage the camera and voids the warranty.
0–24 VDC	Safe operating range.

Voltage	Description
0–1.4 VDC	Indicates a logical 0 (with inverter disabled).
>1.4– 2.2 VDC	Region where the logic level transition occurs; the logical state is not defined in this region.
>2.2 VDC	Indicates a logical 1 (with inverter disabled).

- **Minimum current:** 5 mA
- **Current draw:** 5–15 mA
- If the camera is connected to a PLC device, Basler recommends using a cable that adjusts the voltage level of the PLC to that of the camera.

Opto-Coupled I/O Output Line

Voltage	Description
30 VDC	Absolute maximum. This voltage must never be exceeded. Doing so may damage the camera and voids the warranty.
3.3– 24 VDC	Safe operating range.
<3.3 VDC	Unreliable I/O output.

- **Leakage current:** <60 μ A. Actual leakage depends on operating temperature and production spread of electronic components.
- **Maximum load current:** 50 mA
- **Minimum load current:** Not specified. Consider the following:
 - Leakage current will have a stronger effect when load currents are low.
 - Propagation delay of the output increases as load currents decrease.
 - Higher-impedance circuits tend to be more susceptible to EMI.
 - Higher currents cause higher voltage drops in long cables.


For more information about the I/O lines, see the [I/O Control](#) section.

Circuit Diagrams




→ See [Circuit Diagrams](#).

Cable Requirements

Ethernet Cable

- Use a high-quality Ethernet cable. Use of shielded Cat 5e or better cables with S/STP shielding is recommended.
- Use either a straight-through (patch) or a cross-over Ethernet cable.
- Proximity to strong magnetic fields should be avoided.
- Basler recommends using Ethernet cables from the [Basler cable portfolio](#) 

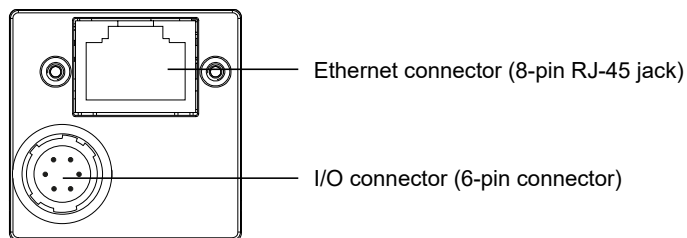
I/O Cable

- The I/O cable must be shielded.
- The I/O cable must have a cross-section of at least 0.14 mm² (close to AWG26).
- Use a twisted pair wire cable.
- Maximum recommended cable length: 10 m
- Camera-side connector: Hirose micro plug (part number HR10A-7P-6S) or equivalent
- Proximity to strong magnetic fields should be avoided.
- If you are supplying power to the camera via Power over Ethernet, the I/O cable will not be used to supply power. However, you can still use the cable to connect to the I/O lines.
- Basler recommends using I/O cables from the [Basler cable portfolio](#) :
 - [Opto-I/O cable, 10 m](#)  (blue cable): For use with the [opto-coupled I/O lines](#) of your camera. Does not provide camera power. Therefore, when using this cable, you must provide power via Power over Ethernet (PoE).
 - [Power-I/O cable, 10 m](#)  (gray cable): For use with the [opto-coupled I/O lines](#) of your camera. Unlike the opto-I/O cable (blue cable, see above), this cable provides camera power.

- [Opto-GPIO Y-cable, 2 × 10 m](#) (yellow-blue cable): Offers two separate wires. One can be used to connect the [opto-coupled I/O lines](#) of your camera. The other one can be used to provide camera power.
- [Power-I/O PLC+ cable, 10 m](#) (gray cable): For use with the [opto-coupled I/O lines](#) of Basler cameras connected to a programmable logic controller ([PLC](#)). It adapts the signal level for zero voltage from PLC level (<8.4 VDC) to TTL level (<1.4 VDC).

Physical Interface

Camera Connectors



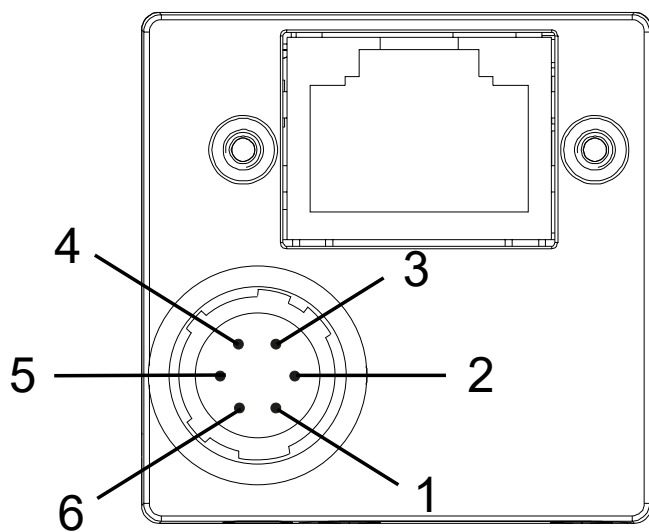
Ethernet Connector

- 100/1000 Mbit/s Ethernet connection to the camera
- If power is not supplied via I/O connector: Power over Ethernet (PoE)
- 8-pin RJ-45 jack
- Recommended mating connector: 8-pin RJ-45 plug (snap-in or with locking screws)
- When using locking screws, note the horizontal orientation of the screws.

I/O Connector

- If power is not supplied via Power over Ethernet (PoE): Power supply
- Hirose micro receptacle (part number HR10A-7R-6PB)
- Recommended mating connector: Hirose micro plug (part number HR10A-7P-6S)

Connector Pinout



Pin	Line	Function
1	-	12–24 VDC camera power
2	Line 1	Opto-coupled I/O input line
3	-	Not connected
4	Out 1	Opto-coupled I/O output line
5	-	Ground for opto-coupled I/O lines
6	-	Ground for camera power

Precautions

→ See [Safety Instructions \(ace, ace 2, racer 2 S\)](#).

Installation

→ See [Camera Installation](#).

Features

→ See [Features](#).